



Security Controls Pty Ltd

Incorporating
TOK Switches Australia Pty Ltd
ABN 75 409 535 622

256 Hyde Street
Yarraville Victoria 3013
Australia

Telephone + 61 3 9689 3488
Facsimile + 61 3 9687 5139
www.omegacorp.com.au

TOK KEY-SWITCHES

Tok Key-Switches

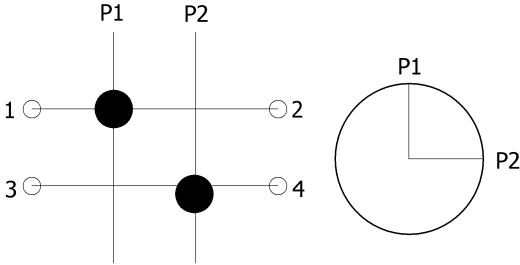
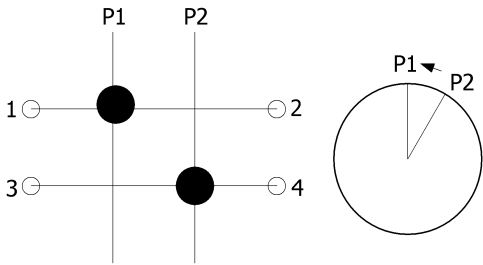
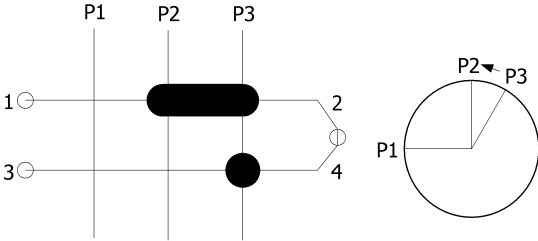
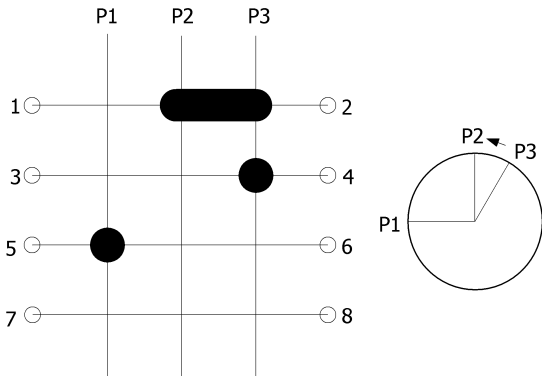
PRODUCT FEATURES:

SIMPLICITY	Easy use and minimum maintenance.
DURABILITY	Fewer moving parts than other keying systems. Switches in use for over 250,000 operations.
INDUSTRY STANDARD	The most common switch in elevators around the country.
COMPATIBILITY	Designed to retro-fit elevator industry standard key-switches. No need to modify operating panels or switch mounts.
COST EFFECTIVENESS	Competitive pricing and a system designed to reduce overheads



Diagrams

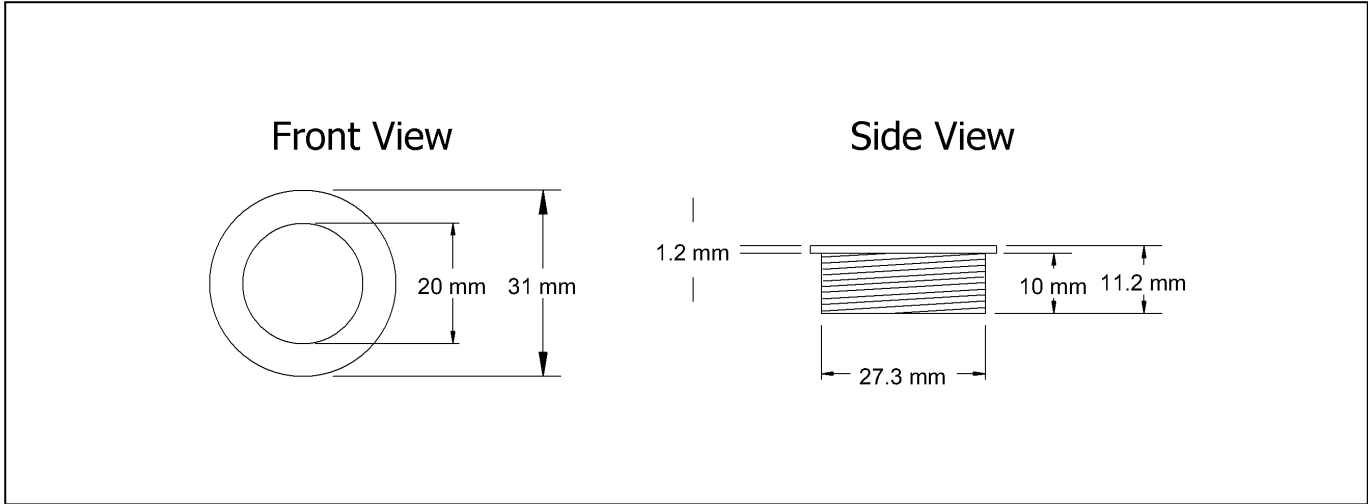
Sample Switch Circuit Diagrams:

<p>2 Position Off/On Used for: Security, Fan, Light, Fire Service etc TOK: OSYA32500200 BiLock: OSQC32500200 Medeco: OSMR32500200</p>	<p>2 Position Spring Return Used for: Security TOK: OSYA31600900 BiLock: OSQC31600900 Medeco: OSMR31600900</p>
<p>002: 2 Position Off/On</p>  <p>Tok Equivalent: P5/3/22-9</p>	<p>009: 2 Position Off/On, Spring Return</p>  <p>Tok Equivalent: P5/3/6-SR</p>
<p>3 Position Spring Return (Off/On/Start) Used for: Fire Service TOK: OSYA32500700 BiLock: OSQC32500700 Medeco: OSMR32500700</p>	<p>3 Position Spring Return (Off/On/Start) Used for: Fire Service TOK: OSYA32507200 BiLock: OSQC32507200 Medeco: OSMR32507200</p>
<p>007: 3 Position Off/On/On Spring Return, Bridged</p>  <p>TOK Equivalent: P5/3/67X</p> <p>Note: This switch is available without the bridge between contacts 2 & 4. TOK Part number: OSYA32502300</p>	<p>072: 3 Position Off/On/On, Spring Return</p>  <p>TOK Equivalent: P5/3/SP18</p>

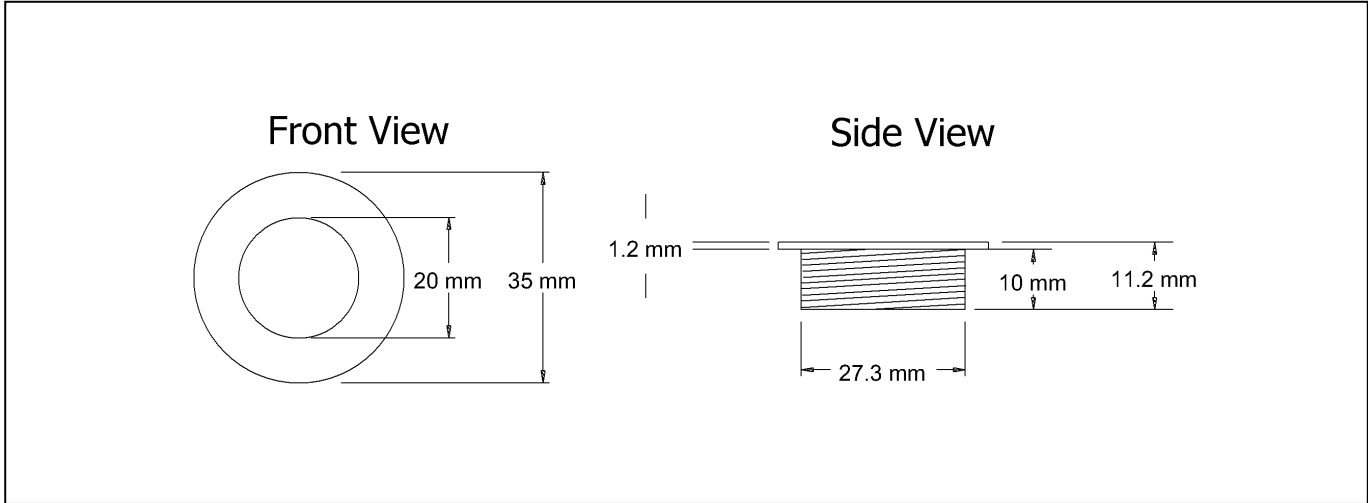
<div>3 Position Spring Return (Off/On/Start) Used for: Fire Service TOK: OSYA32506900 BiLock: OSQC32506900 Medeco: OSMR32506900</div>	<div>3 Position Used for: Exclusive Service, Off Light & Fan TOK: OSYA33507000 BiLock: OSQC33507000 Medeco: OSMR33507000</div>
<div>069: 3 Position On/Off/On, Spring Return TOK Equivalent: P5/3/SP8</div>	<div>070: 3 Position Off/On/On TOK Equivalent P5/3/33-29</div>
<div>2 Position Off/On Used for: Stop Button Replacement TOK: OSYA32503800 BiLock: OSQC32503800 Medeco: OSMR32503800</div>	<div>3 Position Spring Return to Centre Used for: Escalators TOK: OSYA31601100 BiLock: OSQC31601100 Medeco: OSMR31601100</div>
<div>038: 2 Position Off/On TOK Equivalent: P5/3/22-209</div>	<div>011: 3 Position On/Off/On, Spring Return Tok Equivalent: P5/3/7-SR</div>

Switch Mounts / Bezels:

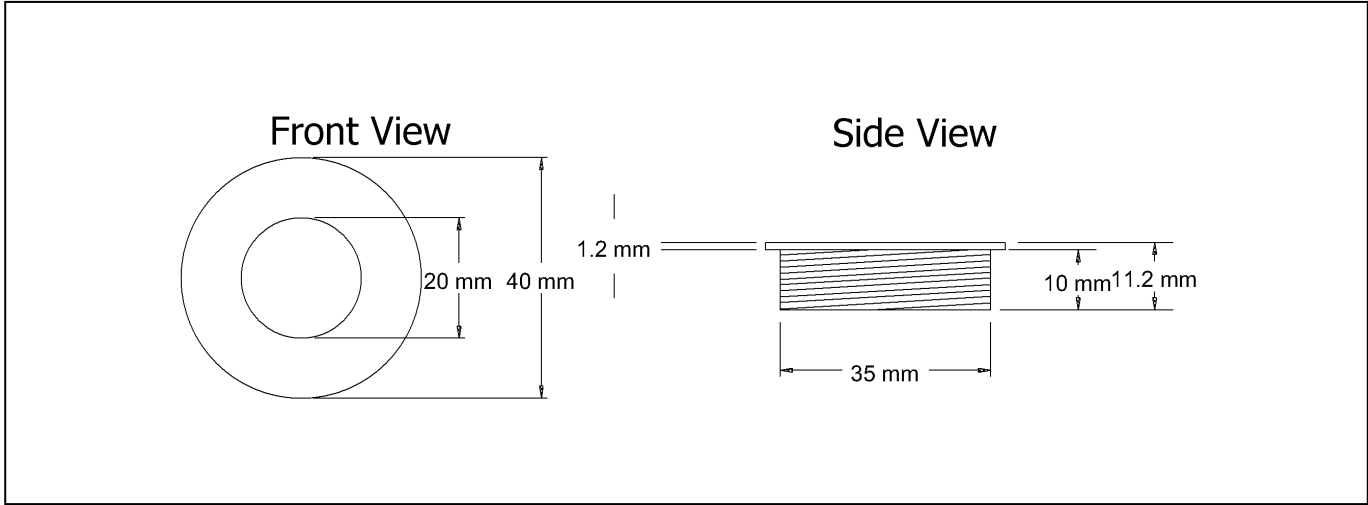
31mm Round Omega Switch Mount – SM31RED (Red) & SM31SILVER (Silver)



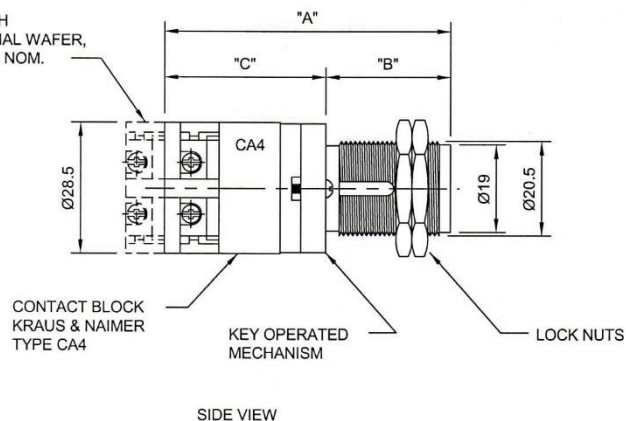
35mm Round Omega Switch Mount – SM35RED (Red) & SM35SILVER (Silver)



40mm Round Omega Switch Mount – SM40RED (Red) & SM40SILVER (Silver)

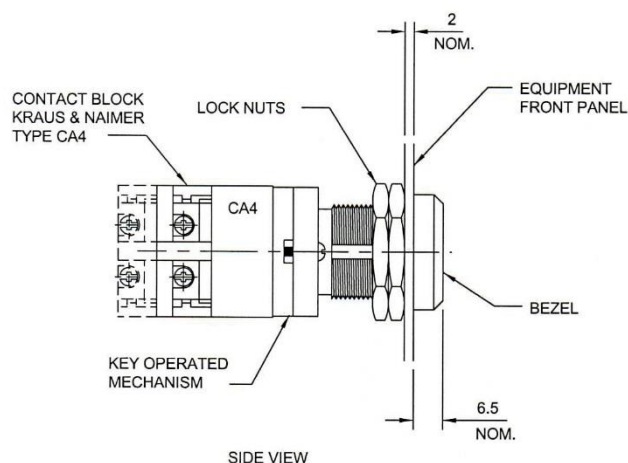
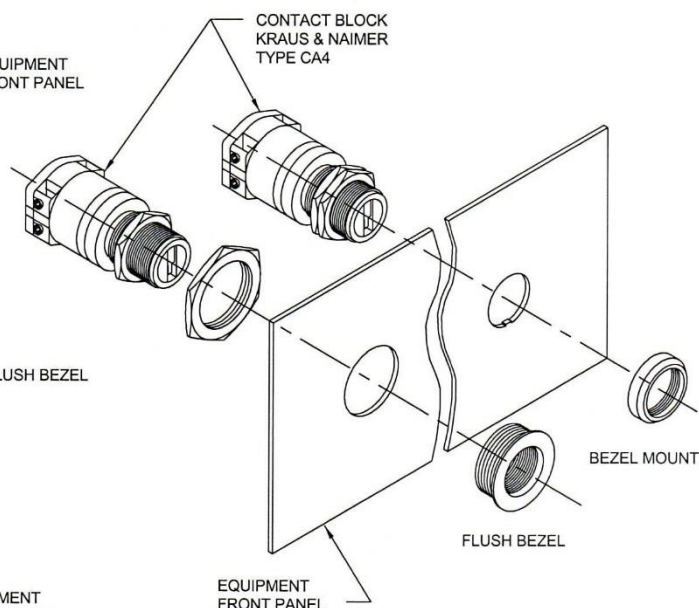
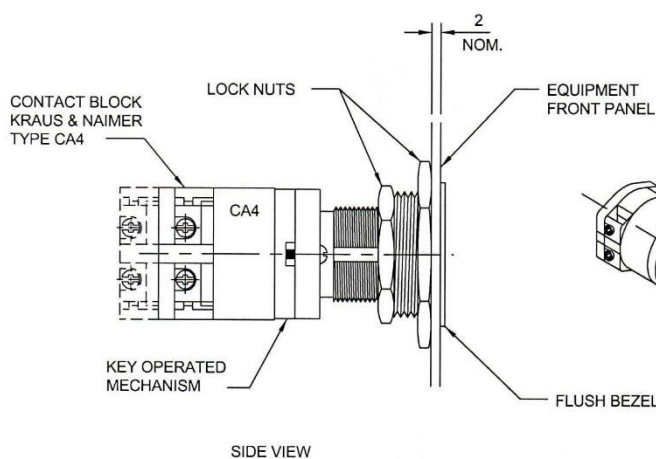


FOR EACH
ADDITIONAL WAFER,
ADD 8MM NOM.



LOCK NUTS NOT SHOWN

END VIEW



KEY TYPE	"A" MM	"B" MM	"C" MM
YALE (TOK)	51.5	15.5	36
STANDARD BILOCK	63	27.5	35.5
QCC BILOCK	60	29	31
STANDARD MEDECO	59.5	23.5	36
RC MEDECO	57.7	27.7	30

BRIEF ELECTRICAL SPECIFICATIONS

240VAC	10 AMPS	RATING
24VDC	10 AMPS	RESISTIVE LOAD
24VDC	6 AMPS	INDUCTIVE LOAD

PLC RATED FOR LOW VOLTAGE/AMPERAGE APPLICATIONS

SWITCHES ARE APPROVED BY OR CONFORM TO ALL
MAJOR RELEVANT INTERNATIONAL STANDARDS AND APPROVALS.



Omega Security Controls Pty. Ltd.

93 Buckley Street, Footscray, Vic. 3011
Tel.+61 3 9689 3488 Fax.(03) 9687 5139
email: nmacmillan@omegacorp.com.au